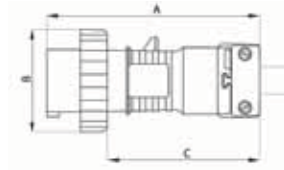


ABB IEC 60 309 International Pin and Sleeve

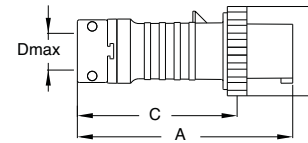
Dimensions

Plugs

TYPE	A (IN./MM)	B (IN./MM)	C (IN./MM)	D _{MAX} (IN./MM)
16A-20A, 2P3W	5.81/147.5	2.80/71	4.47/113.5	0.51/13
16A-20A, 3P4W	6.46/164	3.11/79	5.16/131	0.67/17
16A-20A, 4P5W	6.61/168	3.43/87	5.28/134	0.67/17
30A-32A, 2P3W	6.85/174	3.70/94	4.74/120.5	0.85/21.5
30A-32A, 3P4W	6.85/174	3.70/94	5.41/137.5	0.85/21.5
30A-32A, 4P5W	7.40/188	3.98/101	5.47/139	0.85/21.5
60A-63A, All	10.83/275	4.49/114	8.39/213	1.61/41
100A-125A, All	12.32/313	5.12/130	9.53/242	1.89/48



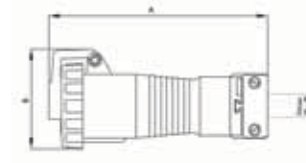
16A-32A



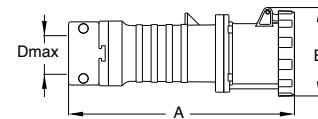
60A-125A

Connectors

TYPE	A (IN./MM)	B (IN./MM)	D _{MAX} (IN./MM)
16A-20A, 2P3W	6.73/171	3.15/80	0.51/13
16A-20A, 3P4W	7.40/188	3.46/88	0.67/17
16A-20A, 4P5W	7.68/195	3.82/97	0.67/17
30A-32A, 2P3W	7.76/197	3.94/100	0.85/21.5
30A-32A, 3P4W	7.76/197	3.94/100	0.85/21.5
30A-32A, 4P5W	8.27/210	4.29/109	0.85/21.5
60A-63A, All	11.26/286	4.37/111	1.61/41
100A-125A, All	12.80/325	4.80/122	1.89/48

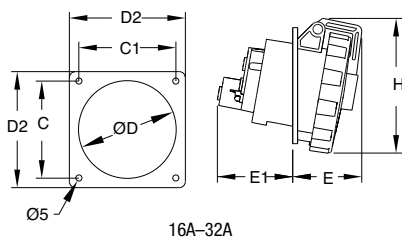


16A-32A

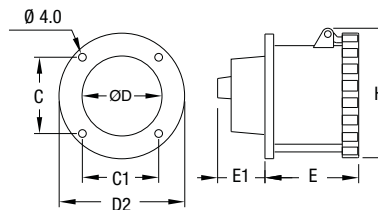


60A-125A

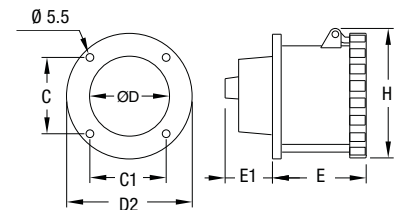
Receptacles



16A-32A



60A-63A



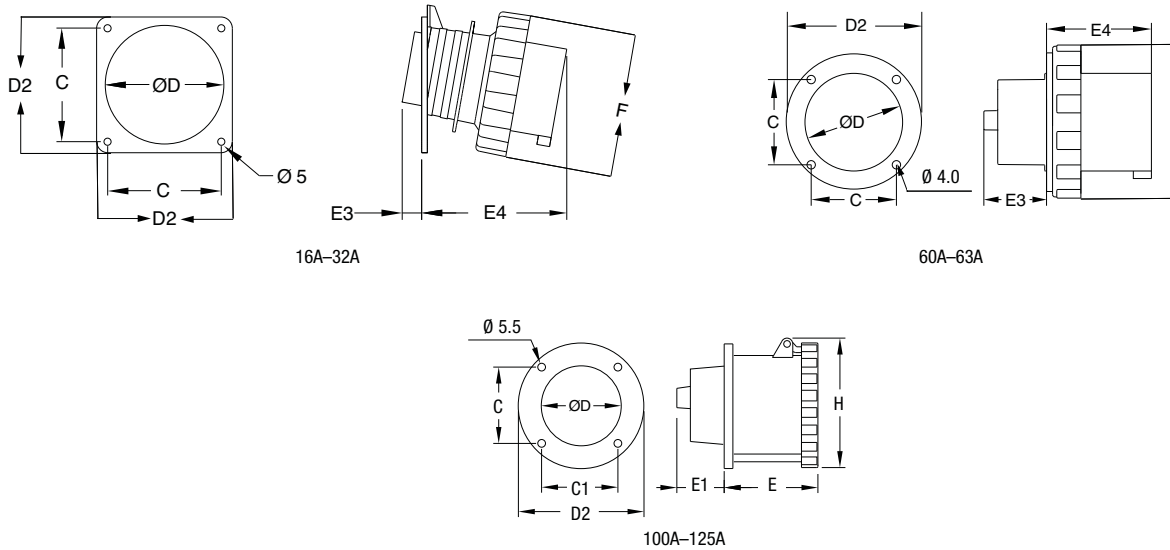
100A-125A

TYPE	C (IN./MM)	C1 (IN./MM)	D (IN./MM)	D2 (IN./MM)	E (IN./MM)	E1 (IN./MM)	H (IN./MM)
16A-20A, 2P3W	3.13/79.5	3.13/79.5	3.27/83	3.74/95	1.77/45	2.24/57	3.74/95
16A-20A, 3P4W	3.13/79.5	3.13/79.5	3.27/83	3.74/95	1.77/45	2.24/57	3.74/95
16A-20A, 4P5W	3.13/79.5	3.13/79.5	3.27/83	3.74/95	1.85/47	2.24/57	3.90/99
30A-32A, 2P3W	3.13/79.5	3.13/79.5	3.27/83	3.74/95	2.20/56	2.40/61	4.09/104
30A-32A, 3P4W	3.13/79.5	3.13/79.5	3.27/83	3.74/95	2.20/56	2.40/61	4.09/104
30A-32A, 4P5W	3.13/79.5	3.13/79.5	3.27/83	3.74/95	2.20/56	2.44/62	4.37/111
60A-63A, All	2.40/61	2.40/61	2.76/70	4.09/104	3.50/89	1.89/48	4.37/111
100A-125A, All	2.80/71	2.80/71	3.46/88	4.53/115	3.94/100	2.28/58	4.80/122

ABB IEC 60 309 International Pin and Sleeve

Dimensions

Inlets



Type	C (IN./MM)	D (IN./MM)	D2 (IN./MM)	E3 (IN./MM)	E4 (IN./MM)	F (IN./MM)
16A-20A, 2P3W	3.13/79.5	3.27/83	3.74/95	0.40/10	1.85/47	2.80/71
16A-20A, 3P4W	3.13/79.5	3.27/83	3.74/95	0.40/10	2.09/53	3.11/79
16A-20A, 4P5W	3.13/79.5	3.27/83	3.74/95	0.40/10	3.43/87	3.43/87
30A-32A, 2P3W	3.13/79.5	3.27/83	3.74/95	0.47/12	2.36/60	3.70/94
30A-32A, 3P4W	3.13/79.5	3.27/83	3.74/95	0.47/12	2.36/60	3.70/94
30A-32A, 4P5W	3.13/79.5	3.27/83	3.74/95	0.47/12	2.64/67	3.98/101
60A-63A, All	4.41/112	2.40/61	2.76/70	3.86/98	1.97/50	3.15/80
100A-125A, All	4.80/122	2.80/71	3.19/81	4.65/118	2.20/56	3.50/89

Mechanical Interlocks: Switched (MI), Fused (MF) and/or Breakered (MB)

